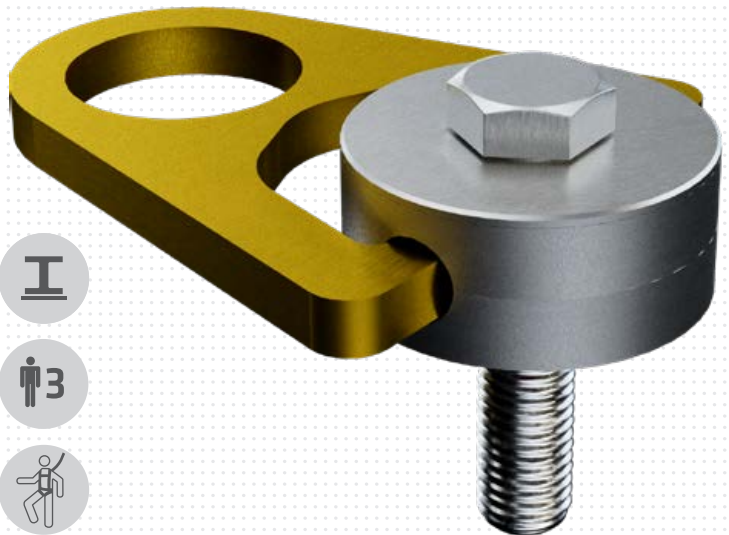




ABS-Lock 360

L360-XX-XX-MXX



MoA 326-04



DIN CEN/TS
16415:2017



DIN EN
795:2012, A



Inhalt | Content



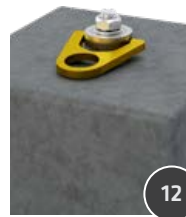
L360-ST-50-M16
kontern / countered



L360-ST-16-M12
einschrauben / screwed in



L360-ST-24-M16
L360-ST-30-M20
einschrauben / screwed in



L360-B-90-M16
einkleben / cemented





L360-ST-16-M12

min.
8
mm



L360-ST-24-M16

min.
12
mm

L360-ST-30-M20

min.
15
mm



L360-ST-50-M16

min. max.
8 26
mm mm



L360-ST-16-M12

min.
8
mm

L360-ST-24-M16

min.
8
mm

L360-ST-30-M20

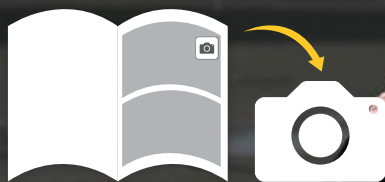
min.
8
mm

L360-ST-50-M16

min. max.
6 26
mm mm

Montageschritte dokumentieren

Document assembly step



Dokumentation mit Bildern vervollständigen!
Complete your documentation using pictures!

Dokumentation ist Pflicht!

Documentation is compulsory!

L360-ST-50-M16
min.
20
mm

L360-ST-50-M16
17



1/3



L360-ST-50-M16

24 | 70 Nm



2/3



3/3





1/6



2/6



3/6



4 / 6

L360-ST-16-M12
Nm 19 | 40 Nm



5 / 6



6 / 6



1/6

L360-ST-24-M16



14

L360-ST-30-M20



17,5



2/6

L360-ST-24-M16



M16

L360-ST-30-M20



M20



3/6



4 / 6

L360-ST-24-M16

• Nm  24 | 40 Nm

L360-ST-30-M20

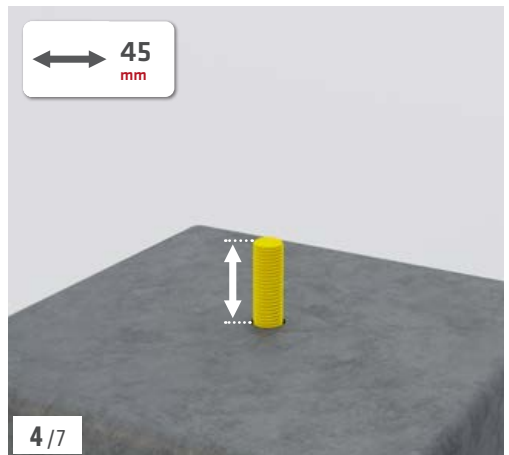
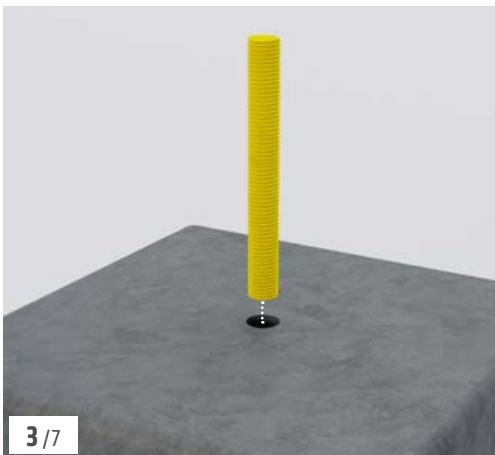
• Nm  30 | 40 Nm

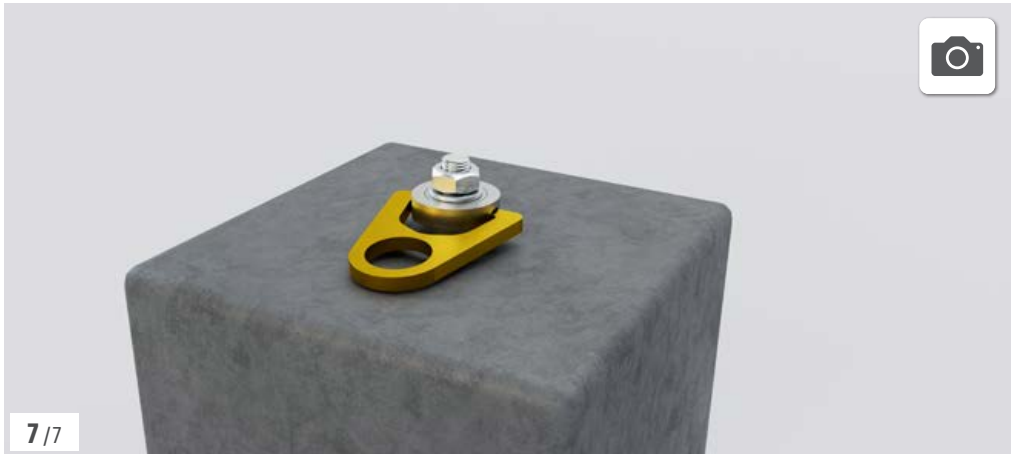
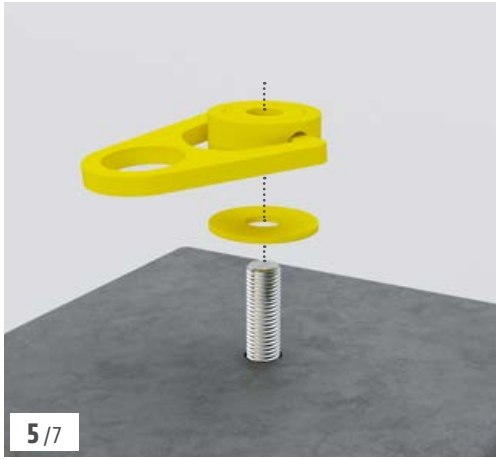


5 / 6

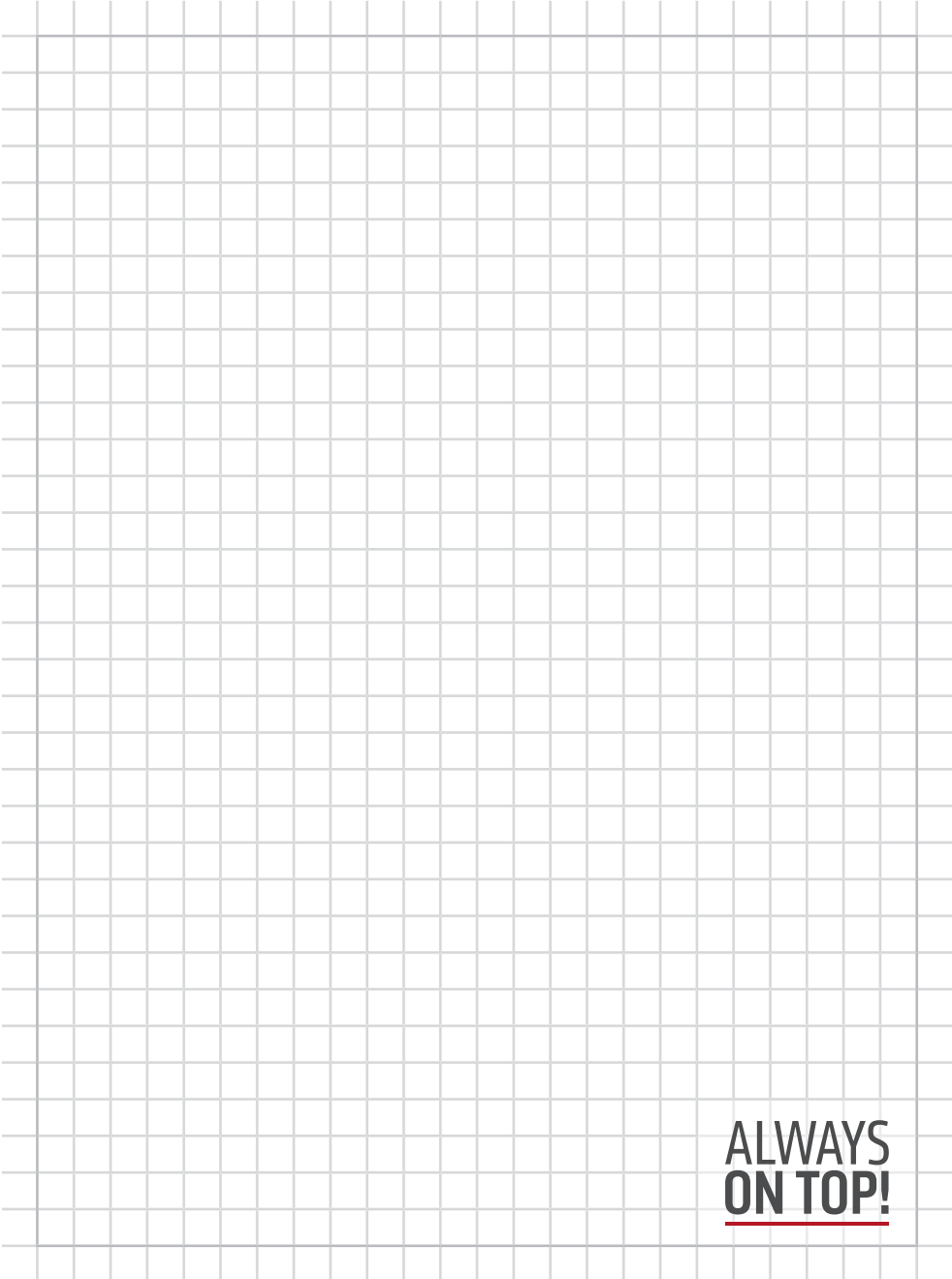


6 / 6









**ALWAYS
ON TOP!**

ALWAYS ON TOP!

ABS Safety GmbH

Gewerbering 3
D-47623 Kevelaer
Germany

Tel.: +49 28 32 972 81 - 0
Fax: +49 28 32 972 81 - 285

info@absturzsicung.de

 www.absturzsicung.de

 .de/en

 .de/fr

 .de/nl



[instagram.com/abssafety](https://www.instagram.com/abssafety)



[youtube.com/abssafetygmbh](https://www.youtube.com/abssafetygmbh)



[facebook.com/ABS.Safety](https://www.facebook.com/ABS.Safety)



[linkedin.com/company/abs-safety-gmbh](https://www.linkedin.com/company/abs-safety-gmbh)



[xing.com/pages/abssafetygmbh](https://www.xing.com/pages/abssafetygmbh)