

(1) CERTIFICATE

(2) No. of the Certificate: **ZP/B007/20-PZ**

(3) Product: **Anchor device type A
Type: ABS-Lock® III-R**

(4) Manufacturer: **ABS Safety GmbH**

(5) Address: **Gewerbering 3
47623 Kevelaer
GERMANY**

(6) The design of this product and any acceptable variation thereto are specified in the appendix to this certificate.

(7) The Certification Body of DEKRA Testing and Certification GmbH certifies that this product complies with the requirements of the test regulations listed under item 8 below. The test results are recorded in report PB 20-013.

(8) The requirements are assured by compliance with

DIN EN 795:2012

DIN CEN/TS 16415:2017

(9) This certificate relates only to the design and tests of the specified product in accordance to the contemplated requirements. Further requirements applied to the manufacturing process and supply of this product, are not covered by this certificate.

(10) The manufacturer is authorised to apply the mark of conformity to the products that conform to the types examined.

(11) This certificate is valid until 2025-04-26.



DEKRA Testing and Certification GmbH
Bochum, 2020-04-27

Signed: Kilisch
Managing director

We confirm the correctness of the translation from the German original.
In the case of arbitration only the German wording shall be valid and binding.

Managing director

TRANSLATION

(12) Appendix to

(13) **Certificate**
ZP/B007/20-PZ

(14) 14.1 Subject and type
Anchor device type A
Type: ABS-Lock® III-R

14.2 Description

The anchor device, type: ABS-Lock® III-R (Fig. 1 – 3) and its possible variants serve as a single anchor point to protect a maximum of three persons against falls from a height. Assembly is done in steel or concrete surfaces with sufficient strength.

The anchor device consists of an offset threaded bolt and a ring eyelet screwed to it. At the upper end of the treaded bolt there is a thread (M14) and then a ledge to accommodate the assembly tool (SW24). The ring eyelet is screwed to the threaded bolt using a sleeve and a thread (M14).

The user connects his PPE against falls from a height to the eyelet. After mounting, the eyelet can be freely rotated.

The anchor device is intended for bearing loads exerted from any direction and is made of corrosion-resistant steel.



Fig. 1: Anchor device,
type: ABS-Lock® III-R-B



Fig. 2: Anchor device,
type: ABS-Lock® III-R-St

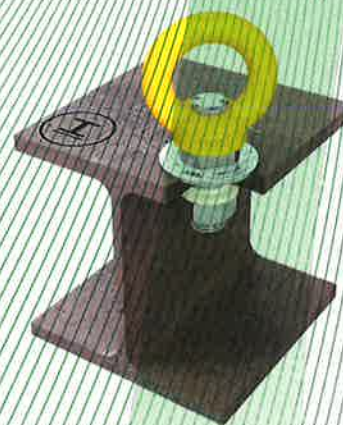


Fig. 3: Anchor device,
type: ABS-Lock III-R-St-kontern

(15) Report

PB 20-013, 2020-04-27