

(1) EU-Type Examination Certificate

according to Module B Paragraph 6.1 of PPE Regulation (EU) 2016/425

- (2) Regulation of the European Parliament and of the Council of 9 March 2016 relating to personal protective equipment (PPE) - Regulation (EU) 2016/425
- (3) No. of EU-Type Examination Certificate: **ZP/B020/19**
- (4) Product: **Anchor device type B, type: ABS-Lock® T-Max**
- (5) Manufacturer: **ABS Safety GmbH**
- (6) Address: **Gewerbering 3, 47623 Kevelaer**
- (7) Risk category: **III**
- (8) The design and construction of this personal protective equipment and any acceptable variation thereto are specified in the appendix to this EU type-examination certificate.
- (9) The certification body of DEKRA Testing and Certification GmbH, Notified Body No. 0158 according to Chapter V of Regulation (EU) 2016/425 of 9 March 2016, certifies that this personal protective equipment has been found to comply with the essential Health and Safety Requirements given in Annex II to the Regulation. The evaluation results are recorded in report PB 19-020. Other possibly applicable Union legislations applicable to the specified personal protective equipment have not been taken into account in this EU-type examination certificate.
- (10) The essential Health and Safety Requirements are assured in consideration of
DIN EN 795:2012 **DIN CEN/TS 16415:2017**
- (11) This EU type-examination certificate relates only to the design, examination and tests of the specified personal protective equipment in accordance to Regulation (EU) 2016/425. For category III personal protective equipment, this EU type-examination certificate may only be used in conjunction with one of the conformity assessment procedures referred to Article 19 (c).
- (12) When applying the CE Marking according to Article 16 and 17 of Regulation (EU) 2016/425 to the products that conform to the types examined, the client is obliged to add, in accordance with the attached pattern, the identification number of the Notified Body engaged in the conformity assessment according to Module C2 or D. Furthermore, the manufacturer is obliged to issue an EU declaration of conformity in accordance with Article 15 of Regulation (EU) 2016/425 and to enclose it with the personal protective equipment, or to indicate the Internet address in the manual and in the instructions in Annex II, point 1.4., at which the EU declaration of conformity can be accessed.
- (13) This EU-Type Examination Certificate is valid until 2024-01-14.

DEKRA Testing and Certification GmbH
Bochum, 2019-01-15

Signed: Wiegand
Certification body

Signed: Mühlenbruch
Special services unit

We confirm the correctness of the translation from the German original.
In the case of arbitration only the German wording shall be valid and binding.


Certification body


Special services unit

TRANSLATION

- (14) Appendix to
- (15) **EU-Type Examination Certificate**
ZP/B020/19
- (16) 16.1 Subject and type
Anchor device type B
Type: ABS-Lock® T-Max

16.2 Description

The anchor device, type: ABS-Lock® T-Max (Fig. 1) serves to protect a maximum of three persons simultaneously against falls from a height. The use takes place as a single anchor point with secured bolted eyelet. The anchor device consists of a clamp mounting rail and two clamps arranged in parallel. The clamping range of the rail between two clamp rails is a maximum of 1490 mm and at least 720 mm. An eyelet is mounted on the clamp mounting rail. The personal protective equipment against falls from a height carried by the user is attached to the eyelet. The anchor device is made of corrosion-resistant steel.

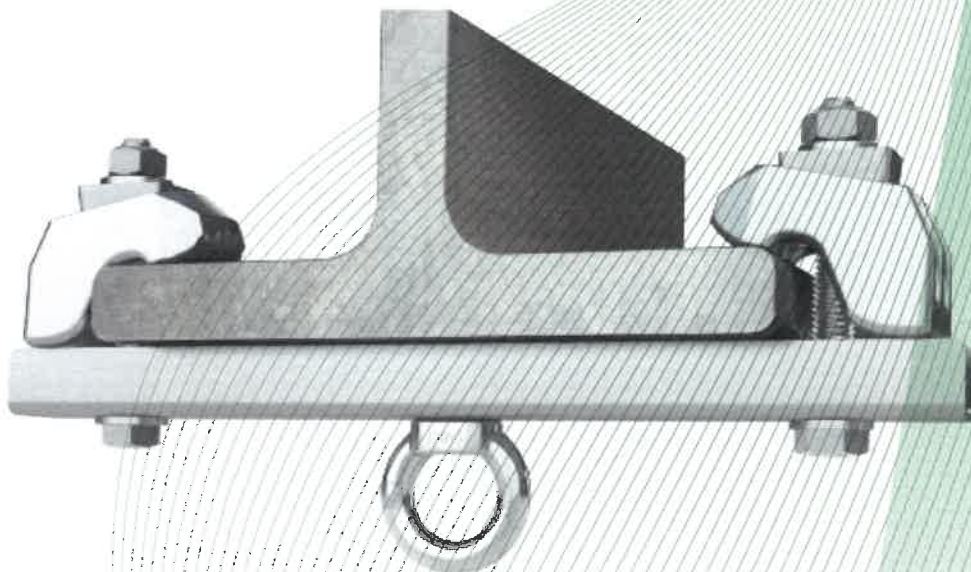


Fig. 1: Anchor device, type: ABS-Lock® T-Max

- (17) Report

PB 19-020, 2019-01-15