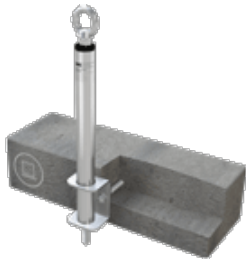


ABS-Lock III-SEITL-SR-B

Anchorage point with supporting tube - designed for cementing into a concrete surface



Our ABS-Lock III-SEITL-SR-B anchorage device comes with a screw-on supporting tube (Ø 42mm) which makes it just perfect for use in a lifeline system. Are you currently setting up a permanent fall arrest system to be used by multiple individuals? Our anchorage point, which has been tested for all directions of load, is suitable for floor, facade and overhead installations - the ideal partner for your lifeline configuration or deployment as a single anchor.

Our ABS-Lock III-SEITL-SR-B is installed in concrete using the angular plate and the 2 anchor rods supplied. We recommend using our optional Special Adhesive WIT-VM-250 for the cementing-in process. This high quality two-component adhesive is suitable for masonry and other concrete surfaces.

Our ABS-Lock III-SEITL-SR-B model has been tested as a single anchorage point for simultaneous usage by 3 individuals. Manufactured completely from stainless steel, this device is highly weather-resistant and not only suitable for installation inside industrial halls, maintenance hangars and vehicle park buildings but also in outdoor applications on roofs and facades.

Certification

DIN EN 795

ABS-Lock SYS

End and corner support HLL Intermediate

Force Directions

Lateral and Axial

Substructure

Concrete

Max. no. of users

Three Persons

Miscellaneous

Stainless Steel

Attachment

embedded

Application

Overhead

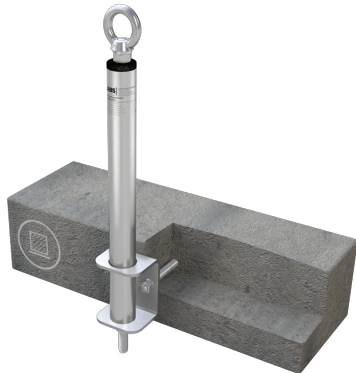
Facade/ Wall

Flat Roofs

- EN 795:2012, A + CEN/TS 16415:2013
- Angular plate for lateral installation
- Concrete \geq C20/25
- Recommended accessories: Special Adhesive WIT-VM-250
- Incl. stainless steel installation set



Accessories / Components



Accessories / Components



Special Adhesive WIT
Special Adhesive for concrete and masonry



Cartridge applicator gun WIT
Designed for Special Adhesive WIT-VM-250