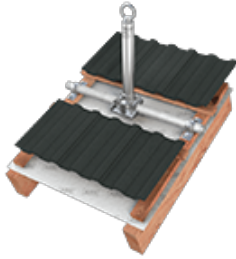


## ABS-Lock SD

Anchorage point with supporting tube - simply screwed onto a wooden beam



Our stainless steel ABS-Lock SD anchorage point for wooden beams is attached to 2 beams using a crossbar. This crossbar is designed to allow the anchor to be adjusted to any desired angle according to the pitch of your roof. The anchorage device rod comes with a supporting tube (Ø 42mm) to provide additional reinforcement - making it a flexible component in your lifeline system.

When deployed as a single anchorage point, the system can secure up to 3 individuals simultaneously. The device is installed using the 4 stainless steel screws which come with it. You can set up a temporary lifeline system by combining 2 or more ABS-Lock SD anchors with an ABS Lanyard.

---

**Substructure**

Wood

**Application**

Pitched Roof

**Attachment**

screwed

**Certification**

EN 795

**ABS-Lock SYS**

HLL Intermediate End and corner support

**Force Directions**

Lateral

**Max. no. of users**

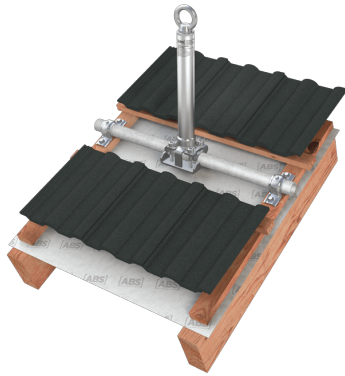
3 Persons

**Miscellaneous**

Stainless Steel

- EN 795:2012, A + CEN/TS 16415:2017
- Designed for load-bearing wooden structures
- Minimum beam dimensions: 60 mm x 120 mm
- Adjustable angle and crossbar position
- Installation materials included





**ABS Lanyard - temporary lifeline system**

Sharp edge-tested kernmantle cable with rope shortener, energy absorber and carabiner hook

