

## ABS-Lock X-Durch

Anchorage point - specially designed for concrete surfaces (countered)



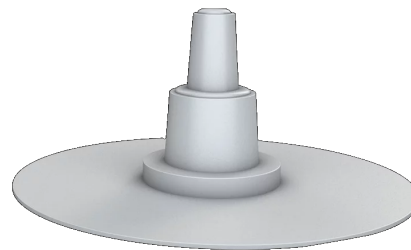
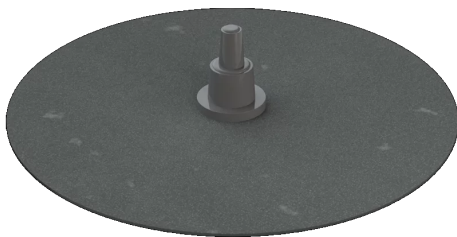
Our stainless steel ABS-Lock X-Durch is a really powerful solution. It is equipped with a 200 x 200 mm base plate and can be installed on a concrete surface or on a hollow-core slab ceiling, as well as in lightweight or porous concrete. The screw-on supporting tube provides additional stability so that the system can be used as a single anchorage point to secure up to 3 workers simultaneously. It is also ideally suited as a corner or end element in a lifeline system. When ordering, please state the required clamp size so that we can ensure that your fall arrest device meets all your expectations.

To help you install your device from above (for example, through a ceiling), we also offer an optional ABS-Lock X-Durch Sleeve. This can be used to pull up the base plate by simply screwing it onto the top end of the thread emerging from the bore hole and pulling it up accordingly.

You can, of course, also use our ABS-Lock X-Durch as an overhead anchorage device. The system is suitable for all directions of load. This makes our anchorage point an extremely flexible component which can be incorporated into your fall arrest and retention system plans to provide the optimum solution - perfectly aligned to the individual needs of your company or building.

- National technical approval ("abZ"): Z-14.9-688
- EN 795:2012, A CEN/TS 16415:2017
- Suitable for installation in a ceiling, on a hollow profile or in lightweight concrete
- Incl. stainless steel installation set
- Optional: Installation aid ABS-Lock X-Durch Sleeve





**ABS-LockSeal Bitu & Bitu-S**

Sealant collar for fall protection anchors installed on a bitumen roof surface (Ø 16, 24, 42 mm)

**ABS-LockSeal Plastic**

Sealant collar for anchorage points (Ø 16, 24 and 42 mm) - specially designed for PVC, PP and PE roof surfaces



**ABS Therm & ABS Signal**

Thermal protective cover & signal rod for fall protection anchors



**ABS-Lock X-SR Extension**

Extension for an ABS-Lock X-SR anchorage point