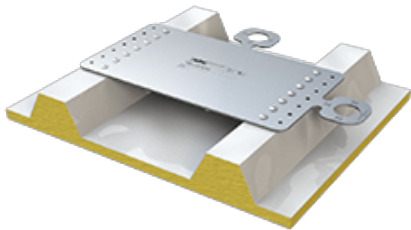


ABS-Lock X-Flat

Anchorage point - designed for riveting onto a sandwich roof or trapezoidal sheeting



Our ABS-Lock X-Flat was developed for container usage and offers 2 separate anchorage options. This anchorage point is designed to secure individuals and is simply installed from above using 14 watertight blind rivets. As it is only a few millimeters thick, you can still stack your containers as usual once it has been installed.

Our anchorage device is suitable for simultaneous usage by 3 individuals and for all directions of load. All you need for a secure hold is a subsurface with a minimum depth of 0.45 mm (steel plating). Despite having to drill holes to insert the blind rivets, moisture is prevented from seeping into your containers: Our anchorage point is manufactured completely from corrosion-free stainless steel and includes an integrated seal.

Use our ABS-Lock X-Flat as a single anchorage point or upgrade it (in combination with a second ABS-Lock X-Flat) by adding a connector cable. This lets you use the device as a temporary lifeline system to provide even more manoevrability during container work.

Certification

DIN EN 795

Force Directions

Lateral

Substructure

Sandwich Trapezoidal Sheeting

Max. no. of users

Three Persons

Miscellaneous

Stainless Steel

Attachment

riveted

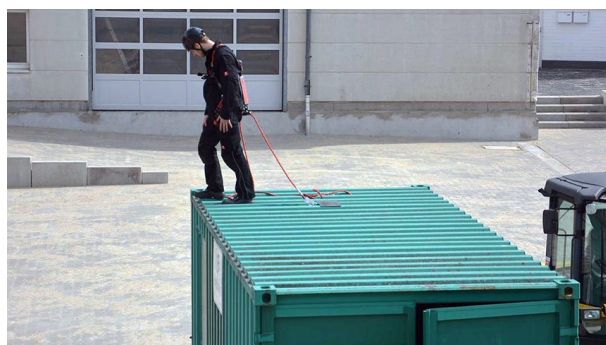
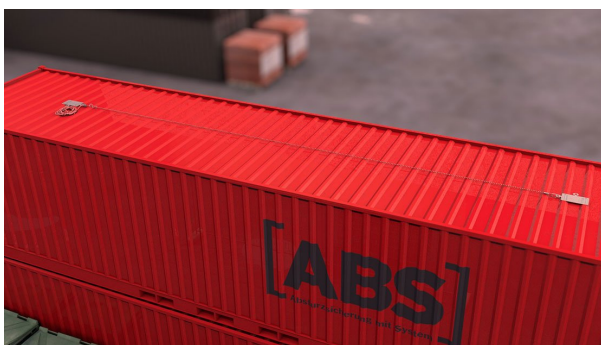
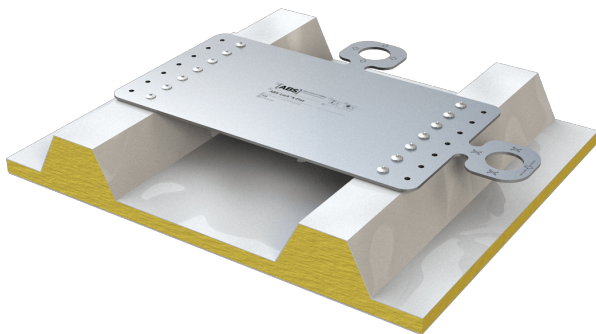
Application

Profile Roof Flat Roofs

- EN 795:2012, A + CEN/TS 16415:2017
- Specially designed for sandwich and trapezoidal sheeting (positive/negative)
- For steel plating ≥ 0.5 mm
- Distance between the rows of pre-drilled holes: 180-250mm / 280-333 mm
- Installation materials included



Accessories / Components



Accessories / Components



ABS Lanyard - temporary lifeline system

Sharp edge-tested kernmantle cable with rope shortener, energy absorber and carabiner hook

