

## ABS-Lock X-H-4

Anchorage point - designed for screwing onto a wooden beam



Our ABS-Lock X-H-4 anchorage device is simply screwed straight onto a load-bearing beam using the 4 stainless steel screws supplied. The anchor rod is 16 mm in diameter and the base plate measures 100 x 100 mm. This anchorage point was designed for all directions of load and can secure 3 individuals.

Upgrade your ABS-Lock X-H-4 anchor by adding an optional supporting tube to implement it as an end or corner component in a lifeline system. This additional tube serves to stabilize the anchorage point and to cope with the prescribed pre-tensioning load.

Combine your ABS-Lock X-H-4 with other ABS anchorage devices to create a lifeline system tailored to meet your own individual needs. Our Team would be happy to provide you with any help or information you may need!

---

### Substructure

Wood

### Application

Flat Roofs      Overhead  
Facade/ Wall

### Attachment

screwed

### Certification

EN 795

### ABS-Lock SYS

HLL Intermediate      End and corner support

### Force Directions

Lateral and Axial

### Max. no. of users

3 Persons

### Miscellaneous

Stainless Steel

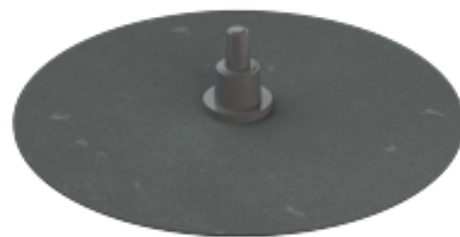
- EN 795:2012, A + CEN/TS 16415:2013
- Designed for load-bearing wooden structures
- Min. beam dimensions: 100 mm x 120 mm
- Incl. installation set
- Add a supporting tube for usage as an end or corner post in a lifeline system





**ABS-Lock X Supporting Tube**

Stainless steel reinforcement for ABS-Lock X anchorage points



**ABS-LockSeal Bitu & Bitu-S**

Sealant collar for fall protection anchors installed on a bitumen roof surface (Ø 16, 24, 42 mm)



**ABS-LockSeal Plastic**

Sealant collar for anchorage points (Ø 16, 24 and 42 mm) - specially designed for PVC, PP and PE roof surfaces



**ABS Therm & ABS Signal**

Thermal protective cover & signal rod for fall protection anchors

