

# ABS-Lock X-Klemm-ST

Anchorage point with counter plate - designed for attachment to a steel girder



Steel girders offer great opportunities for installing anchorage devices. But what do you do, if you want to avoid damaging the structure or negatively influencing the structural calculations? Our ABS-Lock X-Klemm-ST provides the answer you are looking for. Not only does it offer the utmost in flexibility, it is also kind to your subsurface. This anchor, which is manufactured completely from stainless steel, is simply installed and countered using two plates - one on each side of the beam.

The integral component of this anchorage point is its central rod (Ø 16 mm) which has been specially designed to buckle under stress. If required, it can also be upgraded using an optional supporting tube (Ø 42 mm) for use as a corner or end support in a lifeline system. The square base and counter plates each measure 200 x 200 mm. Other sizes are also available upon request. Our standard model is designed for beams measuring max. 150 x 150 mm.

Install our ABS-Lock X-Klemm-ST on the ground, a wall or a ceiling, use it as an anchorage point or component in a lifeline system - or include it in your retention or fall arrest solution. Our ABS-Lock X-Klemm-ST is suitable for all directions of load and provides simultaneous fall protection for up to 3 individuals.

## Substructure

Steel

## Application

Overhead Flat Roofs

## Attachment

clamped

## Certification

EN 795 DIBt Approval | Ü-Sign

## ABS-Lock SYS

HLL Intermediate End and corner support

## Force Directions

Lateral and Axial

## Max. no. of users

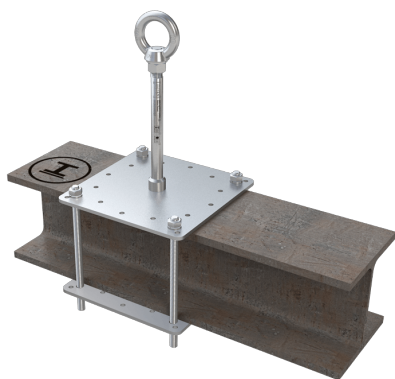
3 Persons

## Miscellaneous

Abseiling suitable (1 individual) Stainless Steel

- National technical approval ("abZ"): Z-14.9-688 (pls. observe the installation instructions provided in the "abZ")
- EN 795:2012, A + CEN/TS 16415:2013
- Clamped onto a steel beam using a base and counter plate
- Upgrade with a supporting tube for usage as an end or corner post in a lifeline system
- Incl. stainless steel installation set
- Available for other girder sizes upon request





**ABS-Lock X Supporting Tube**

Stainless steel reinforcement for ABS-Lock X anchorage points

