

ABS-Lock X-SR-B-A

Anchorage point with anchor rods - designed for cementing onto a concrete surface



Our ABS-Lock X-SR-B-A anchorage point scores top marks through only needing an installation depth of 60 mm. Install this anchor in concrete using the 4 anchor rods supplied and our optional Special Adhesive WIT-VM-250 to secure up to 3 roof workers against fatal falls in accordance with EN 795 and CEN/TS 16415.

This extremely robust stainless steel anchorage point - which has been specially designed for concrete - is equipped with a 150 mm x 150 mm base plate and a welded-on supporting tube (Ø 42 mm). The supporting rod has a special notch in it. This is where the rod buckles, if the force of a fall is exerted on it, thus ensuring it tips over precisely in the direction of the load. We keep a stock of tubes - starting at 300 mm and going up in 100 mm steps to 1000 mm. In addition, you can also equip this anchor with an extra extension device.

Our anchor can also be implemented as a system component in a lifeline system. As it can withhold both lateral and axial loads, it is not only suitable for implementation as an intermediate support but can also be used as a corner or end terminal bracket. If you want to know how to integrate this anchorage device into your lifeline concept, please contact our competent Service Team who will be happy to let you have all the details.

- National technical approval ("abZ"): Z-14.9-688
(pls. observe the installation instructions provided in the "abZ")
- EN 795:2012, A CEN/TS 16415:2017
- Base plate welded-on supporting tube
- Concrete \geq C20/25
- For installation depths \geq 60mm
- Recommended accessories: Special Adhesive WIT-UH-300
- Incl. stainless steel installation set





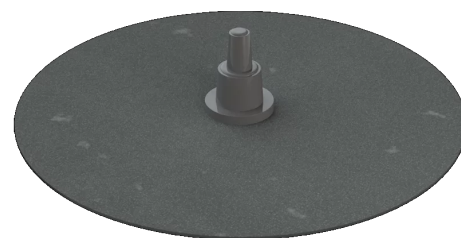
Special Adhesive WIT
Special Adhesive for concrete and masonry



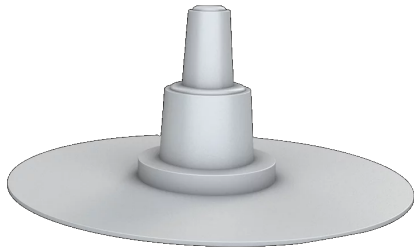
ABS-Lock X-SR Extension
Extension for an ABS-Lock X-SR anchorage point



ABS Therm & ABS Signal
Thermal protective cover & signal rod for fall protection anchors



ABS-LockSeal Bitu & Bitu-S
Sealant collar for fall protection anchors installed on a bitumen roof surface (Ø 16, 24, 42 mm)



ABS-LockSeal Plastic

Sealant collar for anchorage points (Ø 16, 24 and 42 mm) - specially designed for PVC, PP and PE roof surfaces

