

# ABS-Lock X-SR-B

Anchorage point with drive-in dowels - designed for concrete structures



If you are looking for a strong support for a concrete surface: Meet our ABS-Lock X-SR-B single anchorage point - equipped with a base plate (150 x 150 mm) and welded-on supporting tube (Ø 42 mm). Simply attach this anchor to your roof membrane or facade using the 4 drive-in dowels supplied. You only need an installation depth of a mere 65 mm to install it. The supporting rod has a special notch in it. This is where the rod buckles, if the force of a fall is exerted on it, thus ensuring it tips over precisely in the direction of the load.

## Certification

DIBt Approval | Ü-Sign EN 795

## Substructure

Concrete

## Application

Flat Roofs Facade/ Wall

## Attachment

hammered in doweled

## ABS-Lock SYS

HLL Intermediate End and corner support

## Force Directions

Lateral and Axial

## Max. no. of users

3 Persons

## Miscellaneous

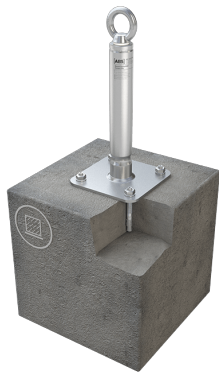
Abseiling suitable (1 individual) Stainless Steel

Our ABS-Lock X-SR-B anchor has been specially reinforced to make it ideal for use in a lifeline system. Use this anchorage device as a corner element or end bracket for a system that fits in just perfectly with your architectural design. There is a range of different rod lengths to choose from - from 300 to 800 mm. We also supply optional 100 mm and 200 mm extensions.

Our ABS-Lock X-SR-B has been awarded national technical approval ("abZ") by the German Institute for Construction Technology (DIBt) and bears the obligatory Ü symbol. It can be subjected to loads in all directions and has been tested as a single anchorage point for simultaneous usage by 3 individuals.

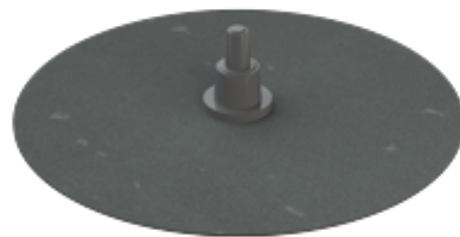
- EN 795:2012, A + CEN/TS 16415:2017
- Base plate + welded-on supporting tube
- Concrete  $\geq$  C20/25
- For installation depths  $\geq$  65mm
- Incl. stainless steel installation set





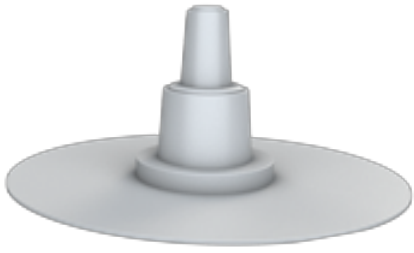
**ABS-Lock X-SR Extension**

Extension for an ABS-Lock X-SR anchorage point



**ABS-LockSeal Bitu & Bitu-S**

Sealant collar for fall protection anchors installed on a bitumen roof surface (Ø 16, 24, 42 mm)



**ABS-LockSeal Plastic**

Sealant collar for anchorage points (Ø 16, 24 and 42 mm) - specially designed for PVC, PP and PE roof surfaces



**ABS Therm & ABS Signal**

Thermal protective cover & signal rod for fall protection anchors

