

ABS-Lock X-SR-HD

Anchorage point with supporting tube - for doweling into hollow core slabs



All you need are 4 specially-designed slab expansion dowels to securely install our ABS-Lock X-SR-HD anchor in a ribbed or concrete hollow core slab ceiling. The subsurface must be made of C45/55 (B55) quality concrete or higher. You can order this anchorage point in a variety of different lengths - ranging from 300 mm to 1000 mm. Just how far the anchor rod needs to protrude depends on the roof covering and whether you are planning to install a retention or arresting system.

All ABS-Lock X-SR-HD components - the anchorage eyelet, base plate (150 mm x 150 mm) and welded-on supporting tube (Ø 42mm) - are manufactured from weather-resistant stainless steel material. The supporting rod has a special notch in it. This is where the rod buckles, if the force of a fall is exerted on it, thus ensuring it tips over precisely in the direction of the load. The product comes with the 4 slab expansion dowels required for installation. Once professionally installed, our anchor is suitable for all directions of load. This makes it ideal for usage as an intermediate or end support in a lifeline system - allowing you to secure every inch of your roof.

A good fall protection solution is not complete without first class, comfortable protective clothing. Our programme includes everything you need for a high quality PPE kit: Safety harnesses, lanyards and luminous safety vests - all available in our Fall arrest PPE section.

Certification

DIBt Approval | Ü-Sign EN 795
ETA Assessment

Substructure

Concrete Ripped Ceiling / Hollow Core

Application

Flat Roofs

Attachment

doweled

ABS-Lock SYS

HLL Intermediate End and corner support

Force Directions

Lateral

Max. no. of users

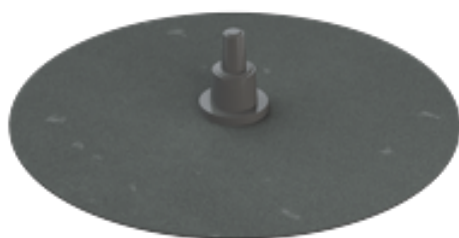
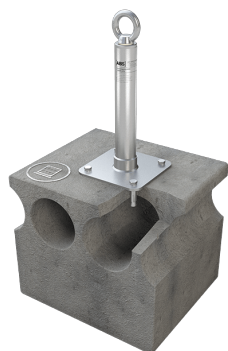
3 Persons

Miscellaneous

Stainless Steel

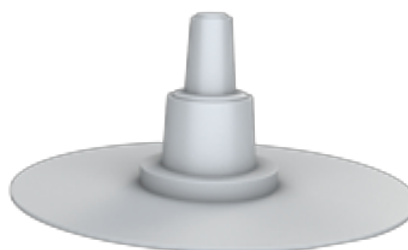
- EN 795:2012, C & CEN/TS 16415:2017
- Base plate + welded-on supporting tube
- Designed for concrete hollow core slab ceilings \geq C45/55 (B55)
- Web depth min. 25mm
- Installed using 4 expansion dowels
- Can be installed in cavities and solid material





ABS-LockSeal Bitu & Bitu-S

Sealant collar for fall protection anchors installed on a bitumen roof surface (Ø 16, 24, 42 mm)



ABS-LockSeal Plastic

Sealant collar for anchorage points (Ø 16, 24 and 42 mm) - specially designed for PVC, PP and PE roof surfaces



ABS Therm & ABS Signal

Thermal protective cover & signal rod for fall protection anchors



ABS-Lock X-SR Extension

Extension for an ABS-Lock X-SR anchorage point



Gewerbering 3 · D-47623 Kevelaer
ABS Safety GmbH



fon: +49 2832 – 97281-0
fax: +49 2832 – 97281-29



info@absturzschutz.de
www.absturzschutz.de