

ABS-Lock X-ST

Anchorage point for steel structures - countered



The ABS-Lock X-ST anchor base plate (200 x 200 mm) is attached to a steel girder using 4 stainless steel nuts and bolts and countered on the other side. Thus installed, this stainless steel anchorage point (Ø 16 mm) serves as a fall arrest or retention system capable of protecting up to 3 of your workers in areas with high fall potential.

The central component of this anchorage device is its stainless steel rod which has been specially designed to buckle under stress. Made from a special steel material, the rod buckles when a person attached to it falls - converting the ensuing lever force into lifting force which can be easily absorbed by the underlying surface. This conversion of energy results in reduced stress.

To use this single anchorage point correctly, your users also need a complete personal fall protection kit (PPE). Put your kit together yourself - or simply grab hold of one of our pre-configured PPE kits.

Certification

EN 795 DIBt Approval | Ü-Sign

ABS-Lock SYS

HLL Intermediate End and corner support

Force Directions

Lateral and Axial

Substructure

Steel

Max. no. of users

3 Persons

Miscellaneous

Stainless Steel

Attachment

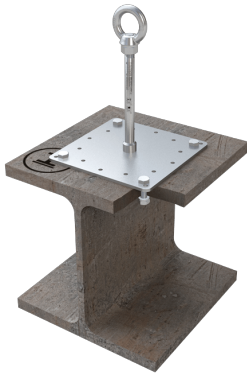
countered

Application

Flat Roofs

- National technical approval ("abZ"): Z-14.9-688 (pls. observe the installation instructions provided in the "abZ")
- EN 795:2012, A + CEN/TS 16415:2013
- Incl. stainless steel installation set
- Upgrade with a supporting tube for usage as an end or corner support in a lifeline system





ABS-Lock X Supporting Tube

Stainless steel reinforcement for ABS-Lock X anchorage points

