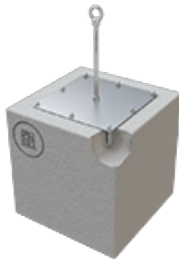


ABS-Lock X-Y

Anchorage point - designed for cementing into porous concrete



Our ABS-Lock X-Y can take a real beating: Simply install the base plate (370 mm x 370 mm) in a concrete surface using the 8 anchor rods supplied and our Special Adhesive WIT-VM-250. Once installed, the system can provide up to 3 workers with a reliable anchorage option on a Ytong surface (porous concrete). The main pre-requisite is a concrete subsurface with a strength class \geq P3.3.

Our ABS-Lock X-Y is certified for all directions of load once it has been professionally installed in Ytong/porous concrete. Due to its high load-bearing capacity, it not only serves as an extremely reliable single anchorage point but is also a great candidate for integration in a lifeline system. Add an ABS-Lock X supporting tube to your anchorage device for extra stability.

Our ABS-Lock X-Y is manufactured from weather-resistant stainless steel material and comes with the set of 8 anchor rods needed for installation. Check out our Accessories section for details on our supporting tube and special adhesive as well as a selection of high quality sealant collars.

Certification

EN 795

ABS-Lock SYS

HLL Intermediate End and corner support

Force Directions

Lateral

Substructure

Lightweight Concrete Concrete

Max. no. of users

3 Persons

Miscellaneous

Stainless Steel

Attachment

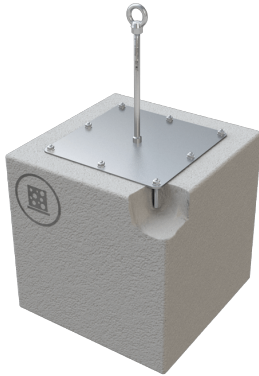
embedded

Application

Flat Roofs

- EN 795:2012, A + CEN/TS 16415:2013
- Porous concrete \geq P3.3
- Add a supporting tube for usage as an end or corner post in a lifeline system
- Recommended accessories: Special Adhesive WIT-VM-250
- Incl. stainless steel installation set





Special Adhesive WIT

Special Adhesive for concrete and masonry



ABS-Lock X Supporting Tube

Stainless steel reinforcement for ABS-Lock X anchorage points

