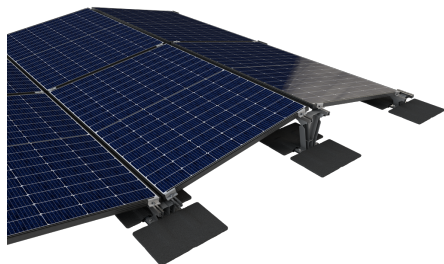


ABS BASE Fusion

Substructure for PV panels - designed to be fused onto a bitumen surface



Installing a photovoltaic panel on a flat roof surface requires a substructure you can rely on. ABS BASE Fusion offers you the ideal solution.

The robust design of this highly weather-resistant aluminium substructure and the simple installation process guarantee that your solar panels can be installed safely. In addition, the fire load up on your roof surface stays the same due to the fact that aluminium materials are used.

This makes our ABS BASE Fusion substructure the perfect choice for your flat roof surface - providing a reliable foundation on which to base your solar energy production.

Application

Flat Roofs

- Flat roof pitch $\leq 5^\circ$
- Does not increase the overall fire load
- Installed using bitumen patches that come with the product (slated, 400 x 270 mm)
- Can be installed using RESITRIX® SK W FullBond (to be provided by the customer, not included in the package)
- Compatible with
 - ABS Solar Guard Mobile guardrail system
 - ABS Guard OnTop guardrail systems



